

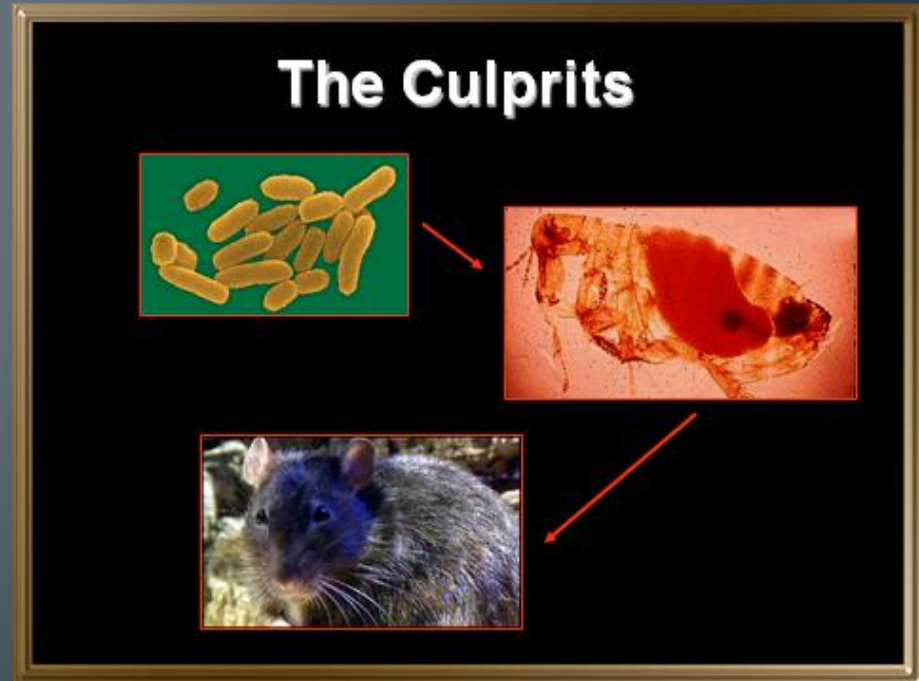
How did the Black Death effect Feudal Europe?

Chapter 8 section 5



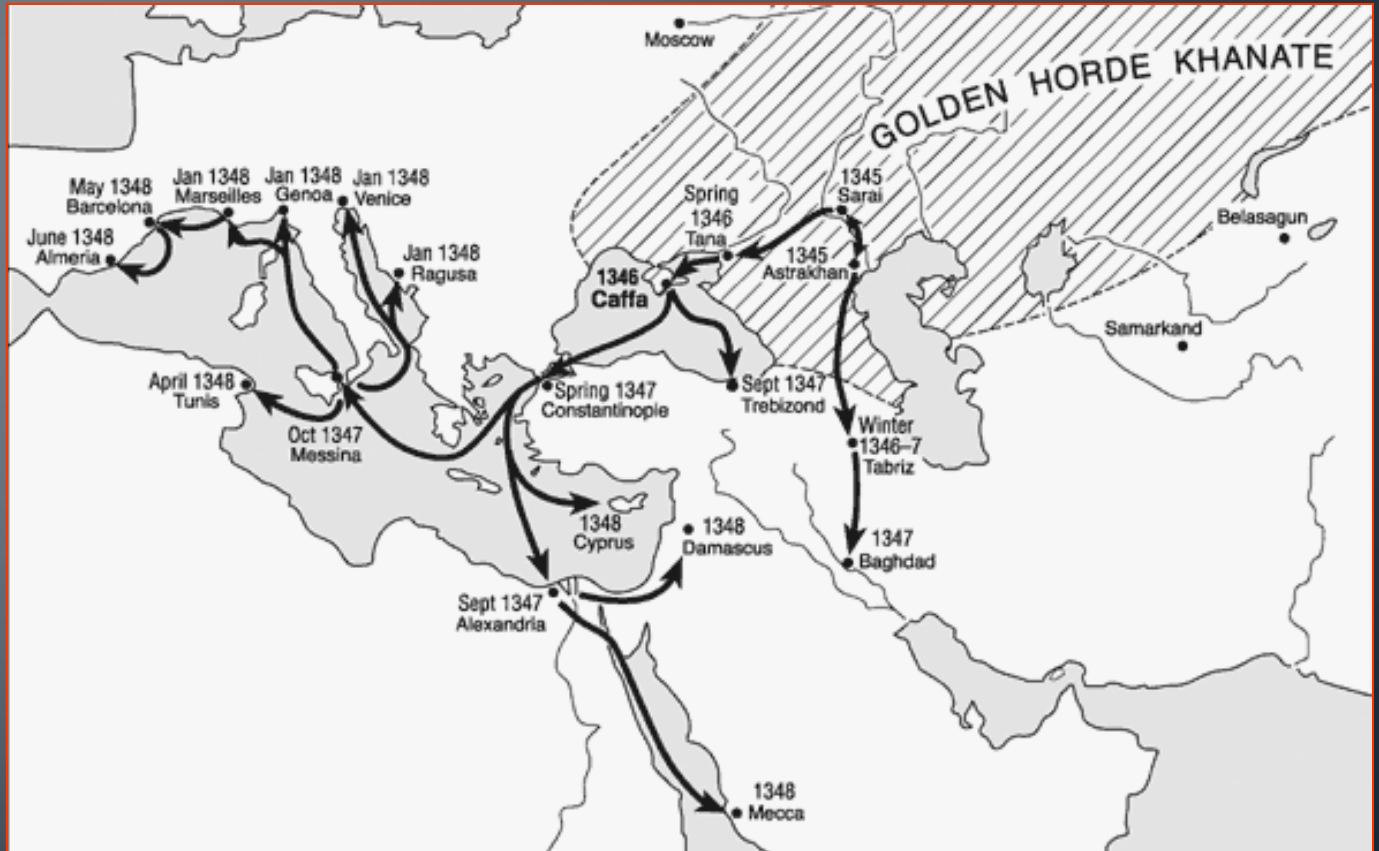
I. What is the Black Death?

1.
 - i.
 - ii.
- 2.
- 3.



II. How did it spread to Europe?

- 1.
- 2.
- 3.



The Black Death in Europe



KEY

Spread of disease:

- by 1347
- by 1349
- by 1351
- by 1353

- Partially or totally spared
- Seriously affected

III. How did people respond to the epidemic?

1.

Attempts to Stop the Plague



A Doctor's
Robe

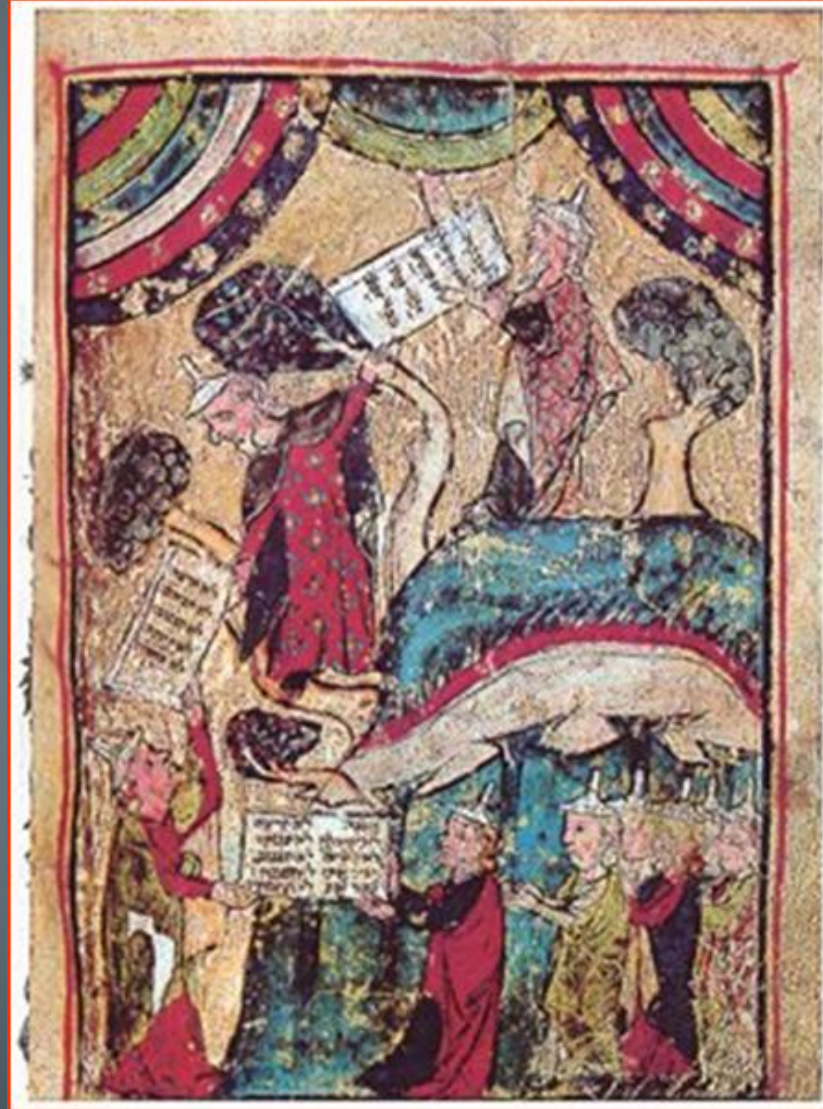


"Leeching"

2.



3. Blame other people.



IV. What were the effects of the Plague?

1.

2.

3.

4.

5.